

COMMUNITY CHURCH 2017-18

ANNUAL REPORT

294 BAPTISMS **3,431** SPIRITUAL COMMITMENTS **2,995** AVG WEEKLY ATTENDANCE
SUFFOLK | WESTERN BRANCH | KEMPSVILLE

287 TOTAL LEADERS 54 NEW LEADERS 177 GROUP LEADERS

825 PEOPLE ON WEEKEND SERVE TEAMS

AVG **624** IN COMMUNITY GROUPS PER TERM **418** ATTENDED A DISCOVER TRACK

4,218 PEOPLE PRAYED FOR / **33** PATIENTS VISITED IN **9** HOSPITALS / **170** PEOPLE RECEIVED TOTAL OF **\$76,414** IN BENEVOLENCE SUPPORT / **107** PEOPLE RECEIVED **773** HOURS OF COUNSELING / **20** FAMILIES CONNECTED THROUGH THE VILLAGE

MANILA, PHILIPPINES
AVG 321 ATTEND PER WEEK
155 BAPTISMS

VIEWS ONLINE CAMPUS
471 WEEKLY AVG

GOD BEHIND BARS
AVG 120 ATTEND PER WEEK
269 FIRST-TIME GUESTS
288 SPIRITUAL COMMITMENTS
33 BAPTISMS
95 STARTED FOLLOWING JESUS

NEXT GEN

- COMMUNITY KIDS
AVG 744 PER WEEKEND
- ALIVE MIDDLE SCHOOL
AVG 38 PER WEEKEND
- ALIVE UNITED
AVG 130 PER EVENT

\$587K INVESTED IN LOCAL & GLOBAL IMPACT

PARTNER ORGANIZATIONS

ACTS 2 NETWORK / ASSOCIATION OF RELATED CHURCHES (ARC) / THE BAIR FOUNDATION / CHESAPEAKE SOCIAL SERVICES / CRISIS PREGNANCY CENTER / EMBRACE TREATMENT FOSTER CARE / FOOD BANK OF SOUTHEASTERN VA / GOD BEHIND BARS / HER SHELTER / JOHN F. KENNEDY MIDDLE SCHOOL / KEMPSVILLE MIDDLE SCHOOL / KINGS FORK HIGH SCHOOL / LUTHERAN FAMILY SERVICES / MERCY DROPS / PORTSMOUTH AREA RESOURCES COALITION (PARC) / PORTSMOUTH SOCIAL SERVICES / ROC SOLID FOUNDATION / SENIOR SERVICES OF SOUTHEASTERN VA / SOUTH NORFOLK CONGREGATIONAL CHURCH SOUP KITCHEN / SOUTHWESTERN ELEMENTARY SCHOOL / TRUITT INTERMEDIATE SCHOOL / THE UP CENTER

LOCAL IMPACT

82 GIFT BASKETS GIVEN TO
38 FIRE STATIONS
6 DMVs
22 MEDICAL FACILITIES
16 POLICE STATIONS



1,000 CARE BAGS FOR HOMELESS

854 BACKPACKS GIVEN AWAY



1,111 PEOPLE SERVED **1,717** HOURS

NOTES OF APPRECIATION FOR
800 425 TEACHERS
325 SOCIAL WORKERS
50 FIRST RESPONDERS

835 THANKSGIVING BOXES
FED 3,340 PEOPLE
102 UNITS OF BLOOD COLLECTED
2,921 LBS OF FOOD DONATED

531 KIDS RECEIVED CHRISTMAS GIFTS

3,738 MEALS PROVIDED THROUGH "BRING A FRIEND" WEEKEND



GLOBAL IMPACT

BRAZIL + EL SALVADOR + WEST AFRICA + PHILIPPINES

6 TEAMS / **38** PEOPLE / SERVED **10,830** HOURS
IN PARTNERSHIP WITH

COMMUNITY CHURCH MANILA CAMPUS
MISSIONARIES TO BRAZIL JASON & KRISTYNA SCHURING
10/40 VISIONS | CONVOY OF HOPE | ORPHAN HELPERS
TALKING HANDS DEAF PRESCHOOL

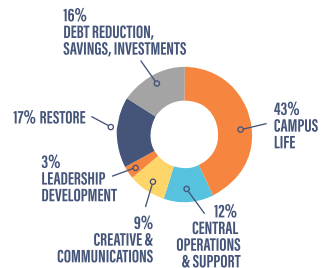
DISASTER RELIEF



FINANCIALS

INCOME / \$4,465,556

EXPENSES / \$4,322,858



community.church

EVERY NUMBER HAS A NAME & EVERY NAME MATTERS TO GOD

HELPING AS MANY PEOPLE AS POSSIBLE LIVE FULLY ALIVE